

# Quiz 4.1-4.3

## 4.1

Sides  
 Scalene 0 = side  
 Isosceles 2 = sides  
 equilateral 3 = sides

Acute  $\Delta$  - 3 acute  $\angle$   
 Right  $\Delta$  - 1 right  $\angle$   
 Obuse - 1 obtuse

---

## 4.2 $180^\circ$ in $\Delta$

- solve for x
- find the missing angle



$$m\angle 1 = m\angle 4 + m\angle 3$$


---

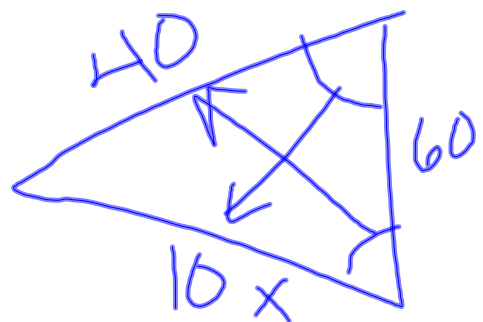
## 4.3

Isosceles  $\Delta$



$$3x = 60$$

$$x = 20$$



$$10x = 40$$

$$x = 4$$